

# ETERNIA

Karaparamba, Calicut

[rera.kerala.gov.in](http://rera.kerala.gov.in)



K-RERA/PRJ/259/2020  
[rera.kerala.gov.in](http://rera.kerala.gov.in)



LET'S TALK

+91 9544 141 000



EXPERIENCE  
THE BEAUTY  
OF VERTICAL  
HOMES

GRAPHICAL IMAGES

  
**PENTIUM**<sup>®</sup>  
CONSTRUCTION PVT.LTD  
CALICUT - PERINTHALMANNA - BANGALORE

# FULFILLING EVERY FAMILY'S DREAM OF



# MY OWN HOME



# 27 YEARS OF PENTIUM

Pentium Construction Pvt. Ltd. is among the pioneer companies in the construction industry of Kerala. Since started in 1994, with its unique business culture and passion in keeping commitments to its customers, Pentium has carved its own unbeatable position among the fellow builders.



We have the track of completing many prestigious projects across Kerala which itself will speak about of our dedicated working style and Engineering capabilities.

We also take care of preserving the mother nature by giving a very strong emphasis on implementing environmental management best practices at where ever we do a construction.

With the mantra of "Quality in what ever we do" , today Team Pentium is on the way to scale new Horizons by fulfilling every family's dream of "My own Home"



## OUR MISSION

To be the partner of choice, provide value added commercial and residential space and real estate solutions, surpassing customer expectations.

In all its residential projects, the company lays a strong emphasis on environmental management, water harvesting and high safety standards.

We are constantly improving our delivery capabilities, and focused at enhancing our technological capabilities.

## OUR VISION

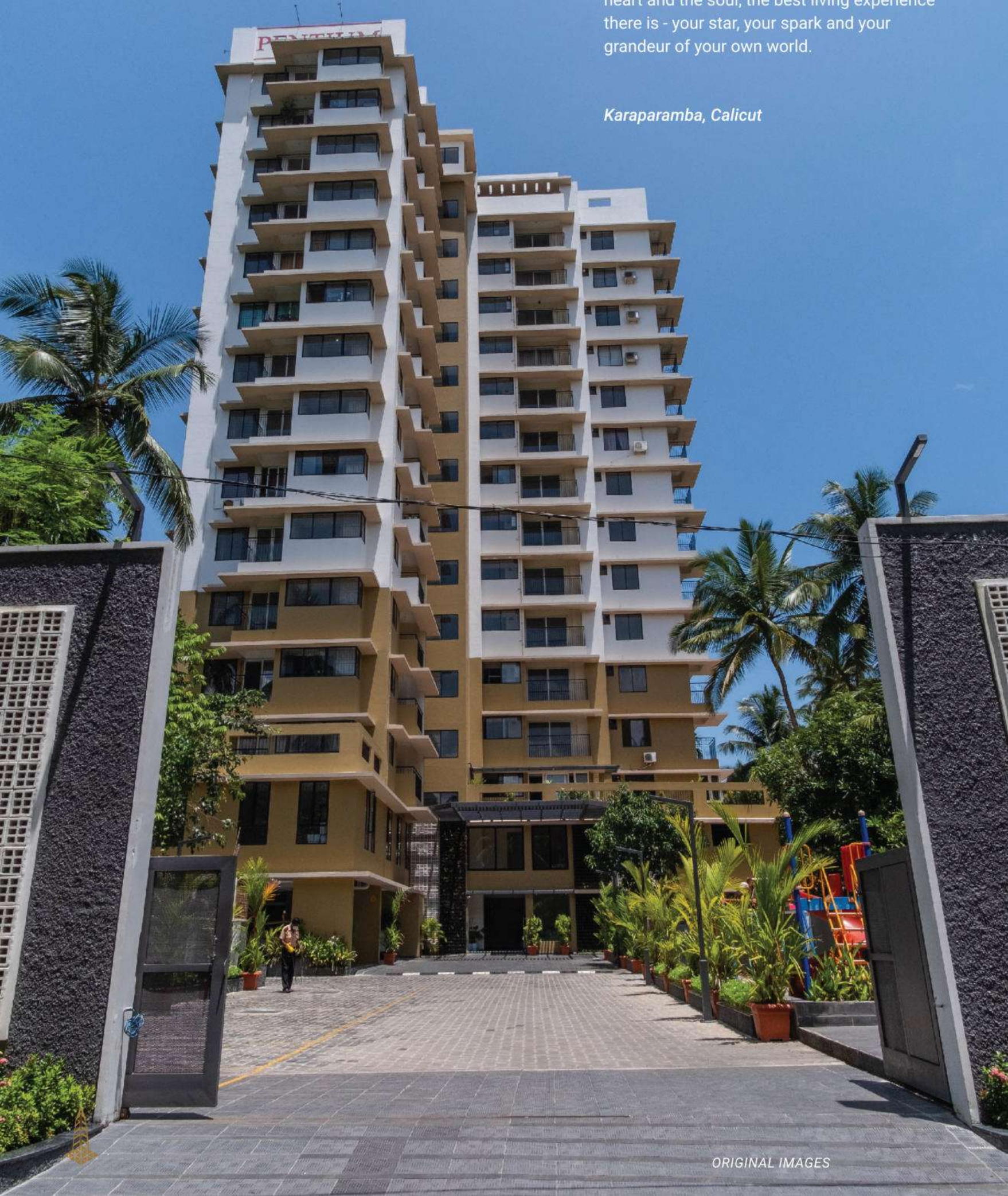
To be the fastest growing property developer in Kerala, India, we believed that there is only one mantra for success: Quality. Our aim is not just a home to stay in, but an asset for generations.



# EXPERIENCE THE BEAUTY OF VERTICAL HOMES

Eternia" a mythical planet believed to be at the centre of the universe. Pentium Builders Calicut invite you on a journey to experience the abode to infinite comfort, luxury and bliss, Eternia Apartments / Flats in Calicut presents life, to its fullest. Giving you the heart and the soul, the best living experience there is - your star, your spark and your grandeur of your own world.

*Karaparamba, Calicut*





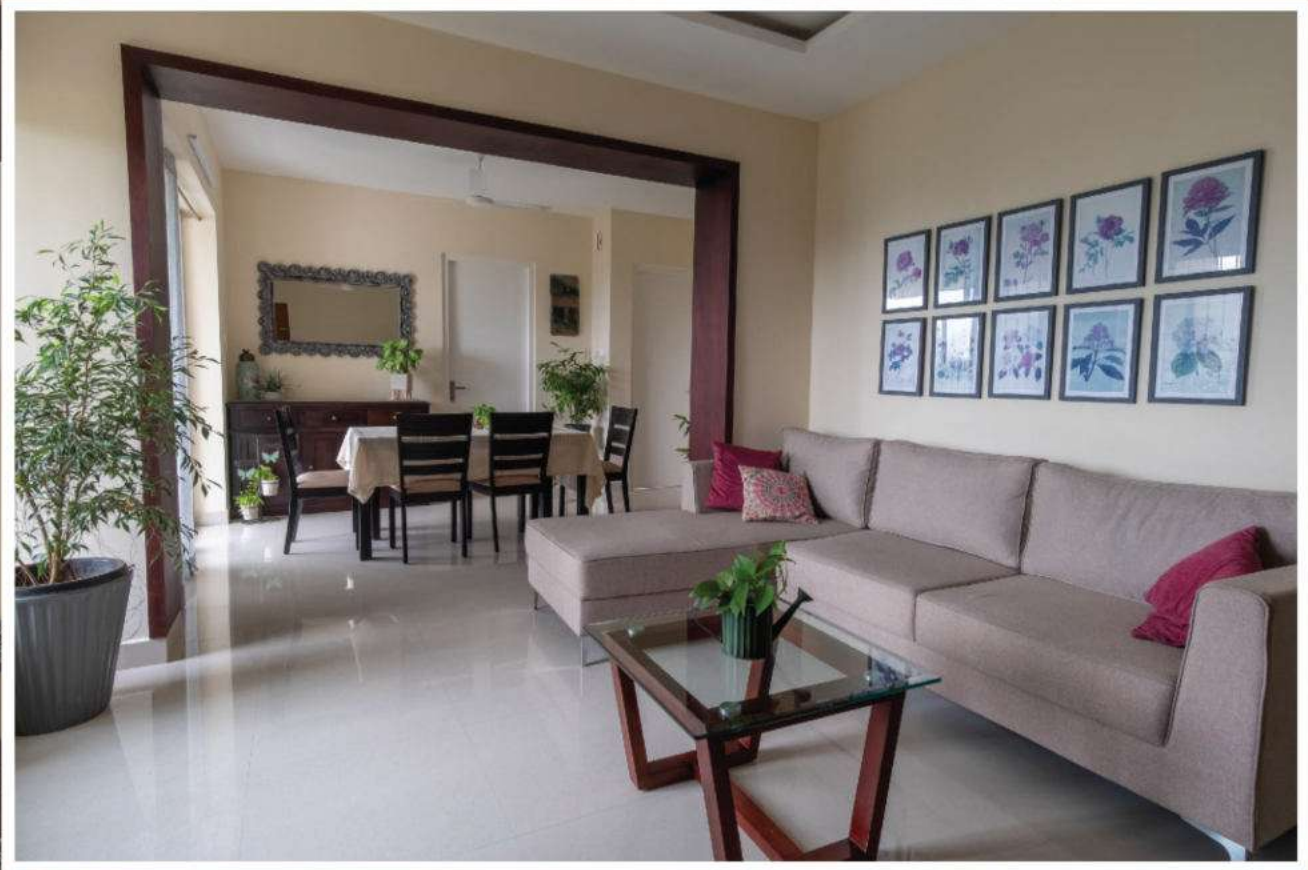
PENTIUM  
ETERNIA  
VERTICAL HOME



# EXPERIENCE THE REAL **FREEDOM**

Pentium Construction Pvt Ltd. is proud to present to you the latest and much anticipated apartment/flat development project, Eternia, at Karaparamba, near Eranihpalam Junction, Kozhikode.





This high rise apartment complex consists of 52 luxury homes spread over Ground + 14 floors and is set in a total of 55.33 cents of land. To make your living at Eternia more personalized, we give you the option to choose from 2 BHK & 3 BHK options. Living at Eternia Apartments will be your dream come true. Succinctly, this is a comfortable life, a luxurious home.

# EXPERIENCE THE REAL COMFORT

## Amenities

1. 24 hrs security
2. Visitor's Car park
3. Landscaped area
4. Kid's play area
5. CCTV Surveillance
6. Intercom facility
7. Yoga room
8. Fitness centre
9. Visitor's lounge
10. Home care office
11. Driver's room
12. Led lighting in common area
13. Passenger lifts-3 nos

14. Wheel chair friendly ramps
15. Generator back up
16. Sewage treatment plant
17. Association hall
18. Open Roof top party area
19. Library room
20. Rain water harvesting



21. Provision for Beauty parlour
22. Provision for General store
23. Provision for centralized gas line
24. Indoor games (carom board, chess board, billiards)
25. Swimming pool with wading pool for kids
26. Senior citizen corner with Herbal garden
27. Solar lighting - in roof top party area



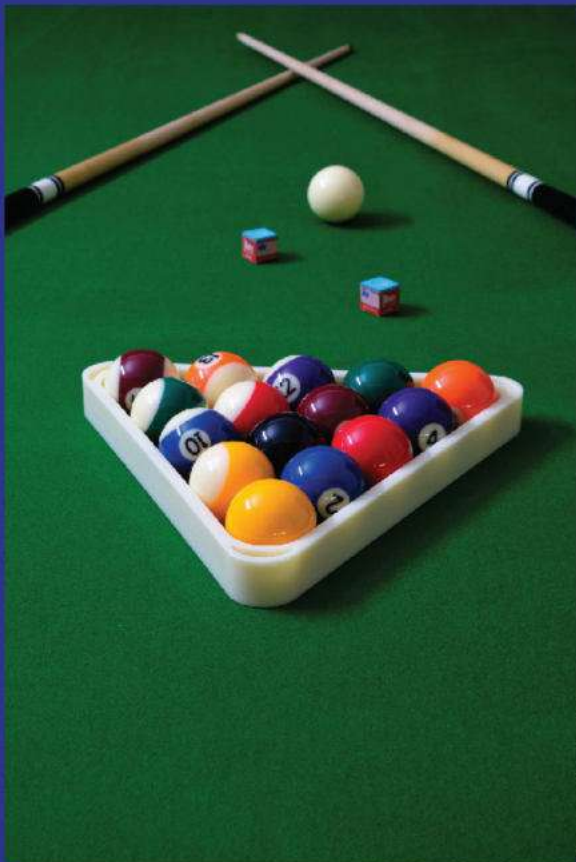
# EXPERIENCE THE SPACIOUSNESS



ORIGINAL IMAGES



# EXPERIENCE THE REAL **REFRESHING** LIFE



ORIGINAL IMAGES



# CAR PARKING

GRAPHICAL IMAGES



GROUND FLOOR CAR PARKING

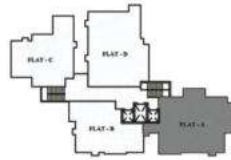


FIRST FLOOR CAR PARKING

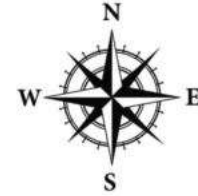


# TYPE A - 3 BED, AREA : 1728 SQ FT

## RERA C.A. : 1039.20 SQ FT



KEY PLAN

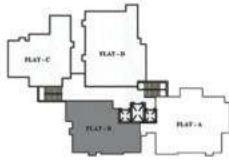


TYPE - A Area : 1728.00 sqft (3 BED)  
RERA C.A. : 1039.20 sqft

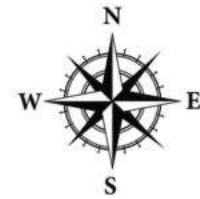
► Dimensions / Plans subject to minor alterations ► Furnitures and fixtures are indicative only ► All dimensions are in centimeters



# TYPE B - 2 BED, AREA : 1278 SQ FT RERA C.A. : 775.90 SQ FT



KEY PLAN



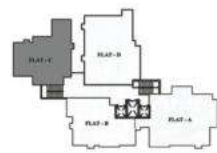
TYPE - B Area : 1278.00 sqft (2 BED)  
RERA C.A. : 775.90 sqft

► Dimensions / Plans subject to minor alterations ► Furnitures and fixtures are indicative only ► All dimensions are in centimeters





# TYPE C - 2 BED, AREA : 1359 SQ FT RERA C.A. : 853.69 SQ FT



KEY PLAN

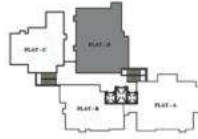


TYPE - C Area : 1359.00 sqft (2 BED)  
RERA C.A. : 853.69 sqft

► Dimensions / Plans subject to minor alterations ► Furnitures and fixtures are indicative only ► All dimensions are in centimeters



# TYPE D - 3 BED, AREA : 1791 SQ FT RERA C.A. : 1119.68 SQ FT



KEY PLAN

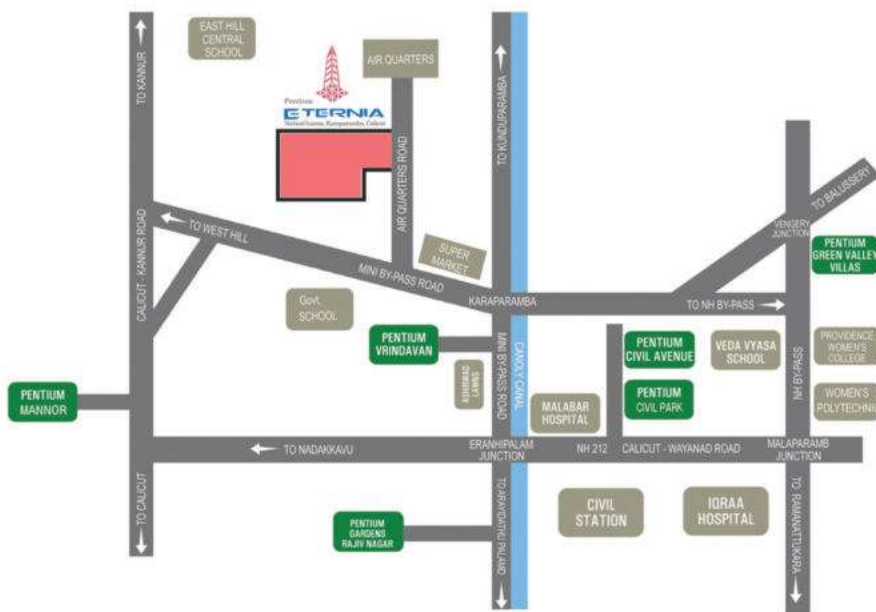


TYPE - D Area : 1791.00 sqft (3 BED)  
RERA C.A.: 1119.68 sqft

► Dimensions / Plans subject to minor alterations ► Furnitures and fixtures are indicative only ► All dimensions are in centimeters

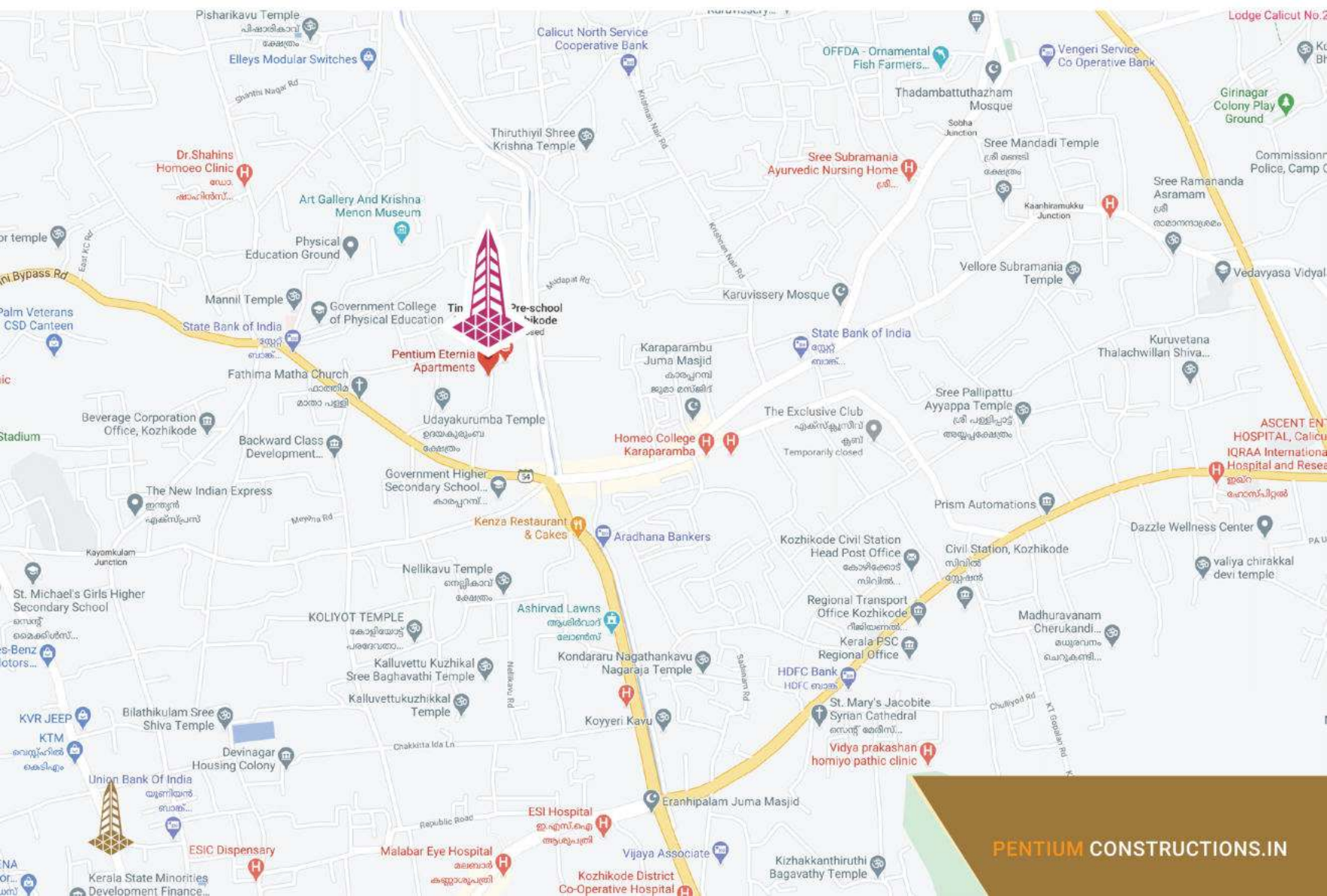


# LOCATION MAP



## Easy Access

- Meitra Hospital - 2 km
- Iqraa Hospital - 2 km
- Providence College - 1 km
- Civil Station - 500 mtr
- Passport Office - 2 km
- KSRTC Bus Stand - 4 km
- Pvt Bus Stand - 4 km
- Mananchira - 5 km
- Railway Station - 6 km
- Airport - 22 km



# SPECIFICATIONS

## Wall & Flooring

Vitrified tiles in lobby, common areas and in rooms.

## Sanitary Fixtures

Western style water closets in bedroom toilets. Wash basins in common area.

## Painting Putty

Putty finish with emulsion interior walls & water proof exterior walls, enamel paint for Inner Doors, Handrails & Grills.

## Electrical

Three phase wiring with single phase connection. Concealed copper wiring. Adequate points for lights, fans & power plug Controlled by ELCB / MCB.

## Doors

Polished front door of teak wood with safety chains, peephole & decorative handle. Inner doors with hardwood frames & panelled shutters.

## Water Supply

Excellent ground water source supported by KWA.

## Windows

Fully glazed / powder coated aluminium sliding shutters with MS grills.

## Kitchen

Stainless steel sink with drain board on black granite tile counter.

Glazed tiles dado upto a height of 60 cm.

## Toilet

Anti-skid tiled flooring. Glazed tiles walls dado up to ceiling height. Provision of fixing wall mounted geyser & exhaust fan in all toilets. Hot & cold water mixer taps & shower in all bathrooms.

## Finance

Project is approved by major financial institutions for easy long term loans.

## Car Parking

Car parking area in the ground floor & first floor



**FULFILLING  
EVERY FAMILY'S  
DREAM OF  
MY OWN HOME**





RERA NO : K-RERA/PRJ/259/2020  
rera.kerala.gov.in



**PENTIUM**<sup>®</sup>  
CONSTRUCTION PVT.LTD  
CALICUT - PERINTHALMANNA - BANGALORE

## LET'S TALK

**Mob : +91 9544 141 000**

**Tel : 0495 - 2768946**

**Email : sales@pentiumconstructions.in**

**Admin Office :** 2nd Floor, Mananchira Tower, A.G. Road, Calicut, Kerala, India.

**BRANCH OFFICE:** 1st Floor, Lucia Tower 19/455 (2), By pass Jn., Perinthalmanna - 679322

**REGD. OFFICE:** SJ Patel Business Chambers IIInd Floor, No.2/2, IIInd Main  
Vinayaka Circle, Palace Guttahalli, Bangalore-560003

[www.pentiumconstructions.in](http://www.pentiumconstructions.in)